

Old World style

with a modern touch





BY RONDA MOLLIKA
PHOTOS BY JAMES RAY SPAHN
STYLING BY COLLEEN MACOMBER

An Indiana home merges Old World looks with hybrid design and modern amenities

Back in 1850, a pioneer couple was looking for just the right place in southern Indiana to make a living off the land. Calvin Nay and his wife found a beautiful spot located between two creeks and rolling hills near the town of Vevay, where they built their log cabin homestead and assorted farm buildings.

More than 150 years later, Leon and Lisa York were looking for the perfect location to build their model home and office for their new log home company.



ABOVE: The front entry door and transoms above the garage doors were custom-made by Eichhorn Stained Glass and imprinted with spruce limbs and cones to tie into the home's spruce tree theme.

LEFT: The Yorks placed their new hybrid log home on the location of the original log cabin built 150 years ago along two creeks.



The great room is surrounded by craftsmen-style windows and overlooks the woods and waterways.

Lisa had grown up down the road from the Nay homestead and remembered the historic cabin and farm — still standing, but in severe disrepair. The land and mature spruce trees still made an idyllic setting for a home and business.

An offer was made and accepted, and within a two-year period, the Yorks finished their own settlement and opened for business that they appropriately named Landmark Log Homes. They built near the large spruce tree that was originally in the

front yard of the old log home and decided to decorate their home using the ancient tree as their connection to the past.

Unlike the original log cabin, the new structure provides modern solutions to energy efficiency and cutting-edge architectural design. Landmark's philosophy emphasizes a "hybrid" design — using the common-sense approach of a stick-built home combined with log and timber architectural features. "The simplistic construction of these hybrid homes allows



The work of art that hangs above the mantel is an original oil painting of the 1850 farmstead. The painting hides a flat-screen TV that can be accessed by remote control.



LEFT: The kitchen features Barth cabinets with twig drawer pulls. Most of the base cabinets utilize drawers rather than doors for easy access to utensils.



LEFT: The spacious dining area opens to the grilling porch and spa through French doors. Sumptuous Australian Cypress floors cover the entire great room and loft areas. BELOW LEFT: The York business office is located at the front of the home.

plumbers, HVAC contractors, and electricians — along with construction companies — to easily and economically build these non-settling homes,” Leon says.

This philosophy comes from Leon and Lisa’s insight of log homes. They’ve built and lived in several log homes themselves and many clients and have first-hand knowledge of their cost-effectiveness.

Leon has been building log homes for 15 years. He’s found that the combination of 2-by-6 construction with the white pine half-logs provides the flexibility that a homeowner wants in a home and allows additional construction features like timber frame roofing systems and stonework to be applied to the building without the problems of settling.

“This merges the best of all the construction types to provide a solid and attractive home,” Leon says. The Landmark Dovelock corner gives the home an authentic appearance — “You can have your cake and eat it, too,” Leon says.

The Yorks took their time when designing the layout of the interior. The central part of the home is a flexible and multipurpose space made up of the great room, dining room, and kitchen. A separate office is placed near the front door, but is in close proximity of the rest of the home for easy access throughout the day.

The expansive 22-foot ceiling with exposed wood collar-tie timbers presents an Old World ambiance. Large multi-paned windows surround the large room and provide clear views to the nearby woods, creeks, and front entrance bridge. “We’re always trying to bring the outside in and to keep with the spruce theme,” says Lisa. The Yorks even chose lighting fixtures that feature a wood-tone finish and cabinet knobs that resemble twigs.

In the kitchen Lisa chose a unique island that resembles a piece of furniture and easily fits in with the rest of the great room décor. The angled island was built with legs and drawers — rather than cabinet doors — for an easy reach to kitchen utensils and dishware. In fact, all of the base cabinets in the kitchen have drawers, since the walk-in pantry provides plenty of storage for heavy kitchen equipment and bulky food containers. Barth cabinets were used in the kitchen and throughout the home including the office and bathrooms.

The Yorks designed the fireplace to be the center of the great room. An original oil painting of the old cabin





LEFT: The secluded loft area is dedicated to guests and includes two bedrooms, a sitting area, and library.

limestone was used to cover part of the garage. The rock continues along the foundation and around each porch posts. Timber roof system details are in full view and highlight each of the three porches. According to the Yorks, these various architectural details have become the new look of log homes. “This style goes above and beyond the log-look that people are searching for and is what we wanted for our home,” says Lisa.

The garage doors feature a carriage-style design with iron hardware components that keep with the Old World look of the house. California-based Exclusive Paint Designs was contracted to faux paint the doors to resemble antique wood. The transoms above the garage doors and the front entry door glass were custom made by Eichhorn Stained Glass of Kentucky with poured tempered glass. The windows were then imprinted with spruce limbs and cones

RIGHT: The half-ton sandstone sink in the guest bathroom was designed and engineered by Leon York. It blends in nicely with the claw-foot tub and pull-chain water closet.

was hung above the mantel in honor of the homestead. It serves a dual purpose — behind it is a flat-screen TV that can be accessed by remote control. The solid dry stacked limestone fireplace is conveniently set up for both gas and wood burning options.

The Old World theme continues into the guest bathroom with a claw-foot tub and pull chain water closet. A unique bathroom sink was custom made from a half-ton slab of sandstone. Leon used his engineering expertise to create a vanity that would house the size, shape, and weight of the stone; he then specified to the sandblaster how deep to make the bowl and where to carve out holes for the faucets. Special fittings were designed to match the depth of the stone.

To continue the classic appearance, the master suite features a spa-like bathroom featuring a full marble shower with multiple showerheads and a custom vanity with marble top.

In addition to the exterior half-logs, traditional Indiana





to tie in the home's inspiration.

The large gable-end covered porch is the first thing you see as you come up the driveway. The massive hammerbeam truss with decorative metal tie and cobbled limestone flooring gives the impression of a European mountain lodge.

"The porches all have a purpose, whether it's work, entertaining, or relaxing," says Lisa.

"The entry porch is for clients and guests to arrive, the back porch is for grilling and access to the spa, and the large gable-end porch is for entertaining and relaxing."

From the gable-end porch, you can see and hear one of the unique waterfalls the Yorks designed and integrated into the landscape. "Lots of pre-planning was needed to make sure

The romantic master bedroom with soaring wood ceilings and hammerbeam trusses makes a grand statement. It's decorated with a sleigh bed, armoire, and storage bench.



The multi-tiered waterfall creates a tranquil setting next to the large spruce tree that inspired the decorating theme.

the height of the waterfall met the height of the porch without going over or under the mark,” Lisa says. “The foundation of the home was also a bit of a head-scratcher during excavation. We had hit bedrock and had to carefully consider the foundation height and backfill to accommodate the siphon effect for the three-acre lake that would supply water to the falls. Once the foundation was set, everything then fell into place.”

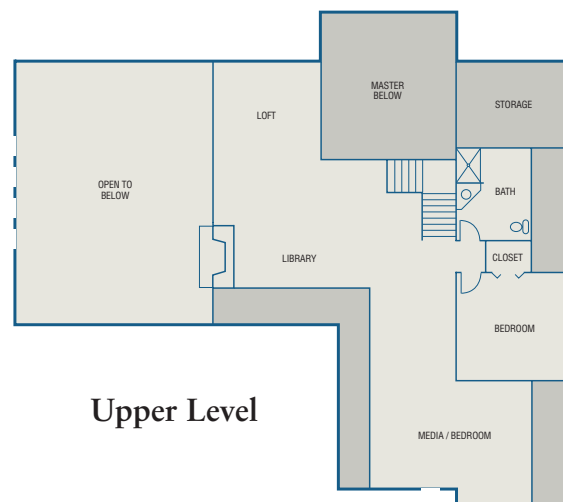
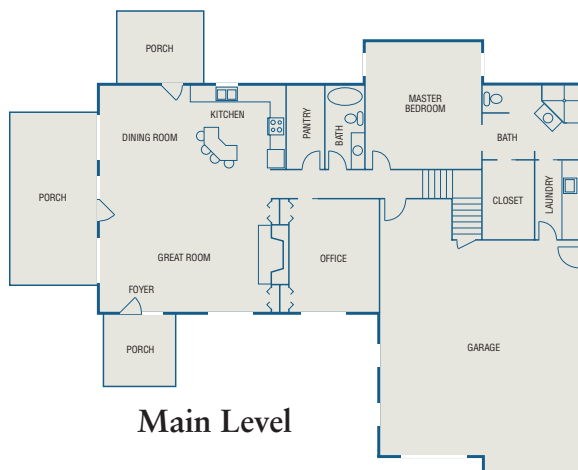
The York home takes full advantage of the views of the creeks and falls that naturally tumble across the acreage. “We were looking for a gradual flow from the porches then onto the yard,” says Lisa. “All of the landscaping flows with the creeks and

waterfalls and follows the natural lay of the land.” She designed the plant beds with native vegetation to maintain an evergreen look throughout the year and added splashes of colorful with perennials along the walkways.

“We’ve built many homes for ourselves and for others, but feel this one is by far the best suited for our busy lifestyle and decorating tastes,” says Lisa. 🍷

LOG/TIMBER PRODUCER: Landmark Log Homes, Vevay, IN.

CONTRACTOR: Landmark Log & Timber, www.landmarkloghomes.com.





The hammerbeam trusses with spruce-decorated iron tie can be seen by guests as they arrive at the Yorks' Indiana home.

